



Australian Government
The Treasury



Measuring What Matters

Australia's National Wellbeing Framework

Gender Responsive Budgeting Workshop with Government of Indonesia
29 February 2024, Jakarta

1. What is Australia's wellbeing framework
2. Reporting on wellbeing can contribute to gender impact assessments and gender objectives, by identifying policy objectives, providing data and measuring progress
3. Gender impact assessments are an example of how to embed wellbeing frameworks in decision making

What is Australia's wellbeing framework?

Inclusion, fairness and equity

Healthy

A society in which people feel well and are in good physical and mental health, can access services when they need, and have the information they require to take action to improve their health.

Secure

A society where people live peacefully, feel safe, have financial security and access to housing.

Sustainable

A society that sustainably uses natural and financial resources, protects and repairs the environment and builds resilience to combat challenges.

Cohesive

A society that supports connections with family, friends and the community, values diversity, promotes belonging and culture.

Prosperous

A society that has a dynamic, strong economy, invests in people's skills and education, and provides broad opportunities for employment and well-paid, secure jobs.

It starts with five themes which describe the vision or objective for Australian society

What is Australia's wellbeing framework?



What is the purpose of the wellbeing framework?

1. **understand what matters** most to Australians.
2. put people and progress, fairness and opportunity at **the core of government** thinking.
3. **track progress over time:** where we are doing well and where we need to do better.



What is it used for?



Dashboard

- First Statement released July 2023
 - Publishes data on each of the 50+ metrics
 - Includes historical data so we can see progress over time
- Includes an online dashboard
 - The user can chose gender, location, age, and socioeconomic status (where data permits)
- Progress against indicators will be publicly updated annually

How is it relevant to gender budgeting?

Healthy throughout life

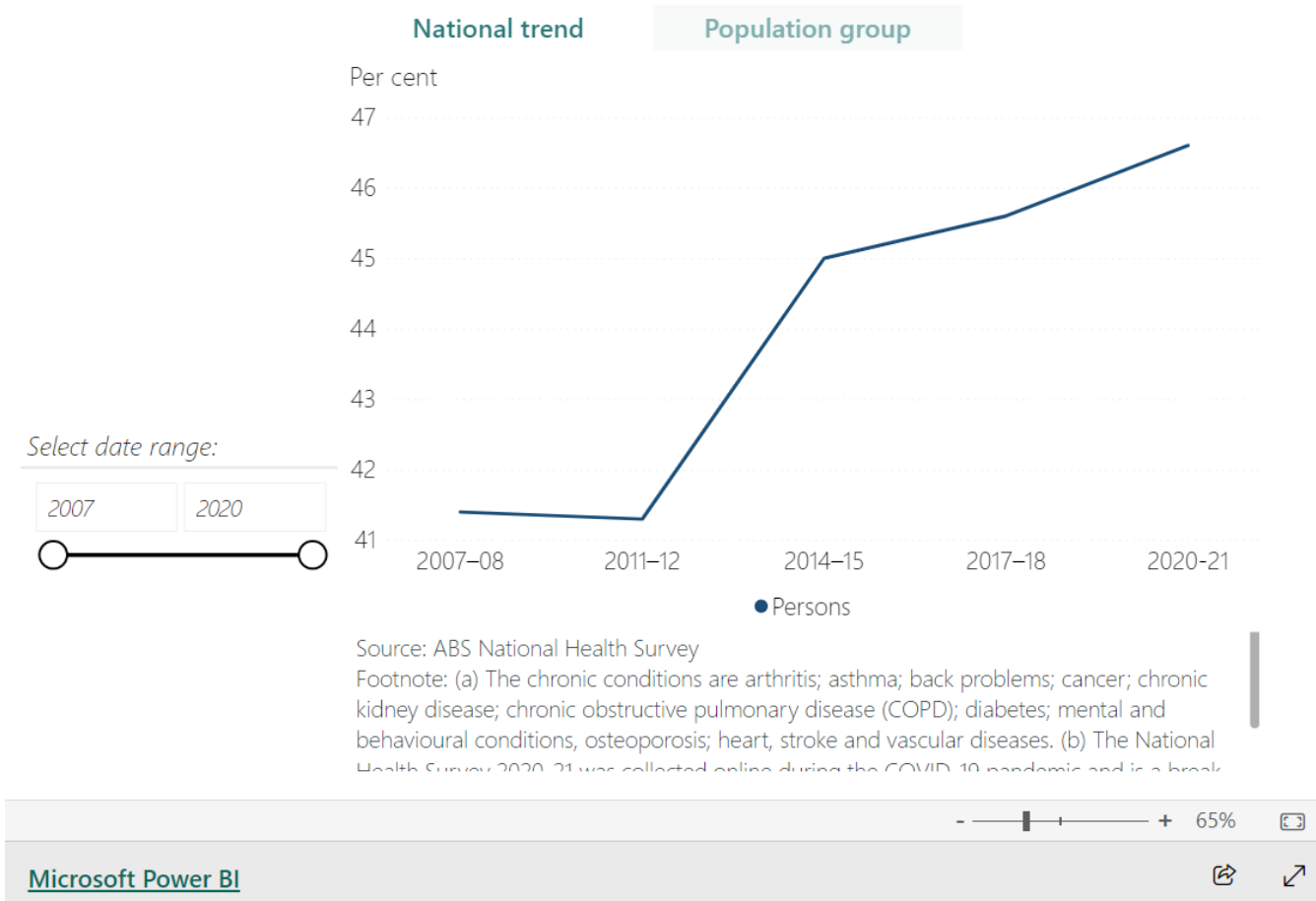
Indicator	Metric	Why this metric	Progress	Latest Value ⁽ⁱ⁾
Life expectancy	Life expectancy at birth ^(a)	Life expectancy is one of the most used measures for the general state of health	Improved 2001–03 to 2019–21	Female: 85.4 yrs Male: 81.3 yrs
	Health adjusted life expectancy ^(b)	Health adjusted life expectancy considers the quality of life lived, not just the length	Improved 2003 to 2022	Female: 74.1 yrs Male: 71.6 yrs
Mental health	Proportion of people who experienced high or very high levels of psychological distress ^(c)	This scale is a globally recognised measure of psychological distress and is one indicator of the mental health and wellbeing of the population	Stable 2004–05 to 2017–18	13.0%
Prevalence of chronic conditions	Proportion of people with one or more selected chronic health conditions ^(c)	Chronic conditions are an ongoing cause of substantial ill health, disability and premature death	Deteriorated 2007–08 to 2020–21 ⁶	46.6%

Source: (a) ABS Life Tables
(b) The Australian Institute of Health and Welfare (AIHW) Australian Burden of Disease Study
(c) ABS National Health Survey

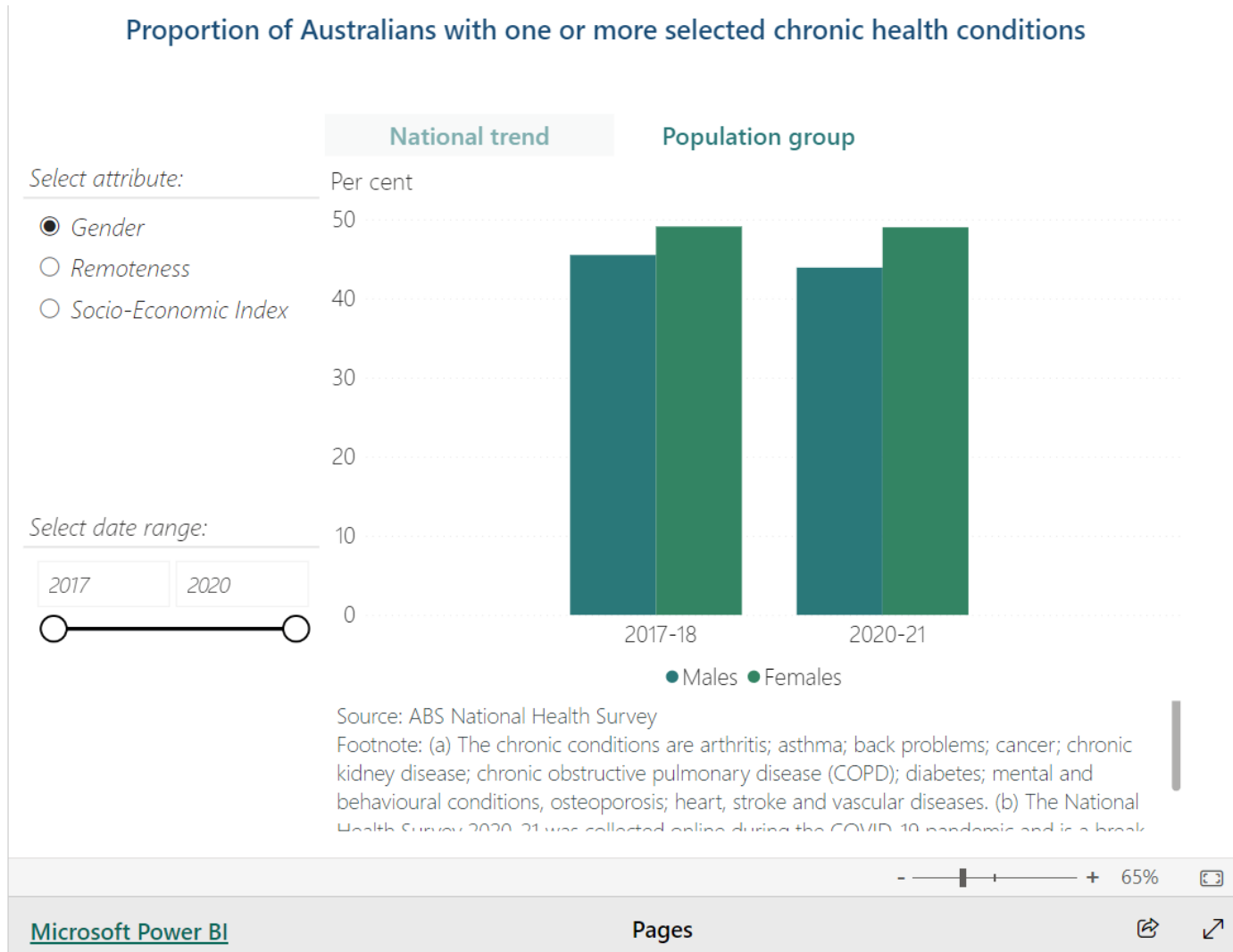
Note: (i) Unless specified the latest value is the last data point in the series.

Example: prevalence of chronic conditions

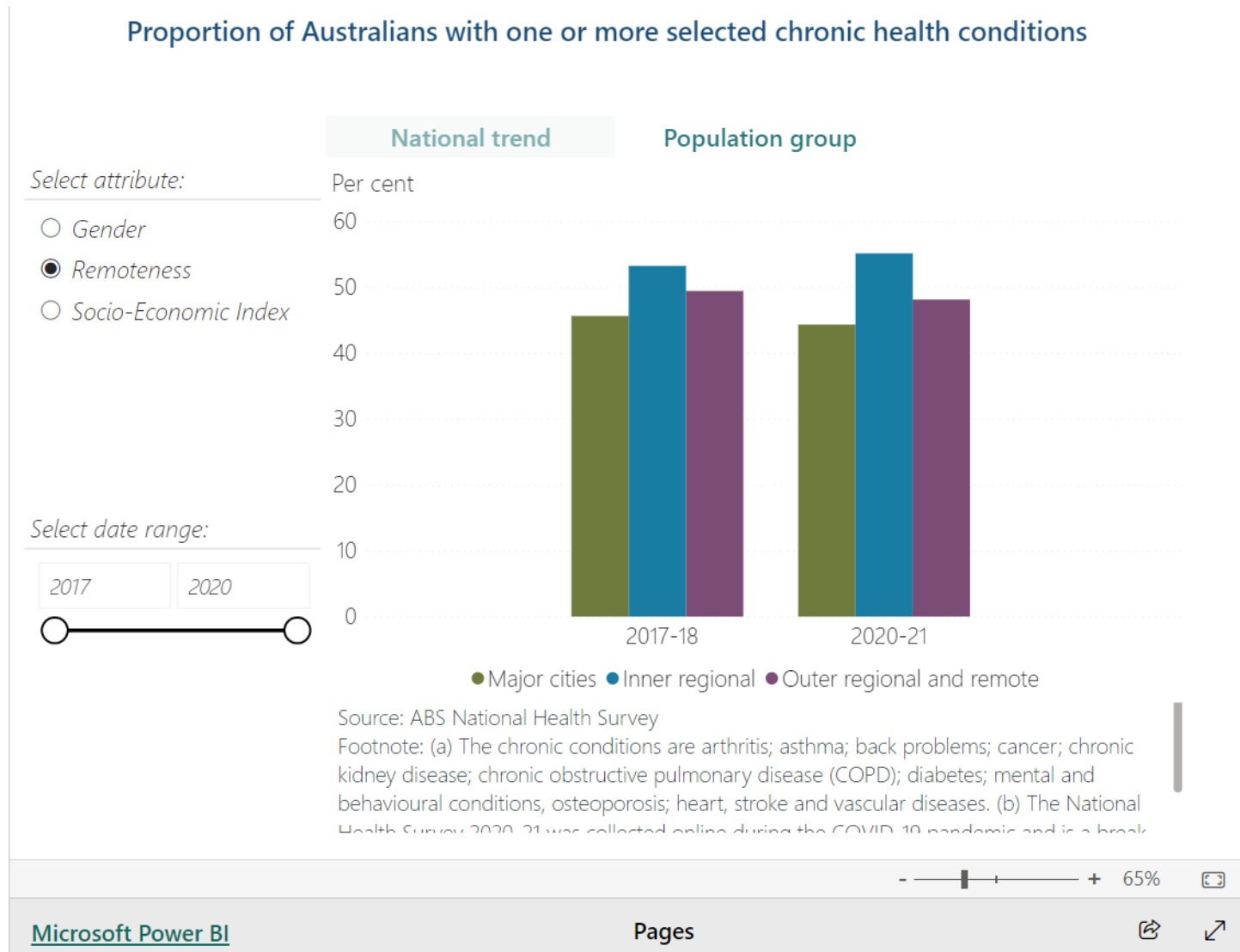
Proportion of Australians with one or more selected chronic health conditions



Example: prevalence of chronic conditions



Example: prevalence of chronic conditions



Example: feelings of safety

Proportion of people who felt 'safe' or 'very safe' walking alone during the day and night

Select attribute:

- Day
- Night

Per cent

50

In general, more women feel unsafe walking alone at night compared to men. In the 2016 ABS Personal Safety Survey which includes a gender split, 25.6 per cent of women chose not to walk alone at night because they felt unsafe compared to 4.2 per cent of men.³

Select date range:

2012

2021



2012-... 2013-14 2014-15 2015-16 2016-17 2017-18 2018-19 2019-20 2020-21 2021-22

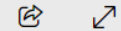
● Safe ● Unsafe

Source: Steering Committee for the Review of Government Service Provision, Report on Government Services 2023

Footnote: The original data is collected as a part of ANZPAA's National Survey of Community Satisfaction with Policing. Until October 2015, the National survey sampled people aged 15 years or over. After 2015, the survey samples people aged 18 years or over.

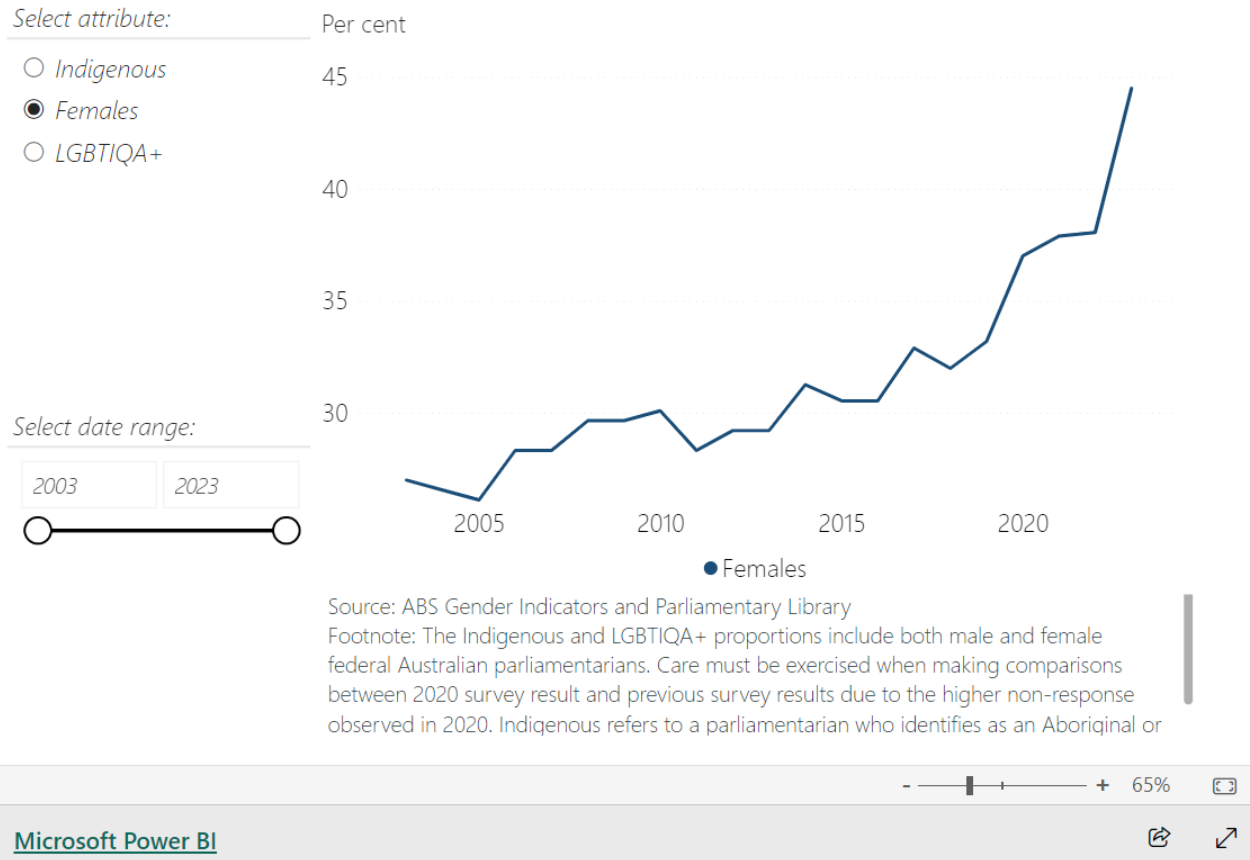
- + 65%

Microsoft Power BI



Example: representation in Parliament

Proportion of Federal Australian Parliamentarians who are women

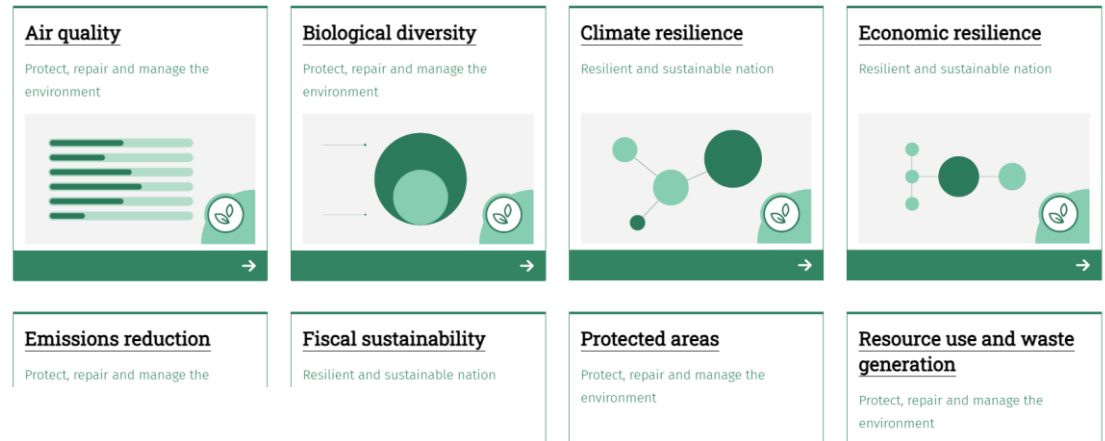


For more examples...

The July 2023
Statement and
Dashboard are on the
[Treasury website](#).

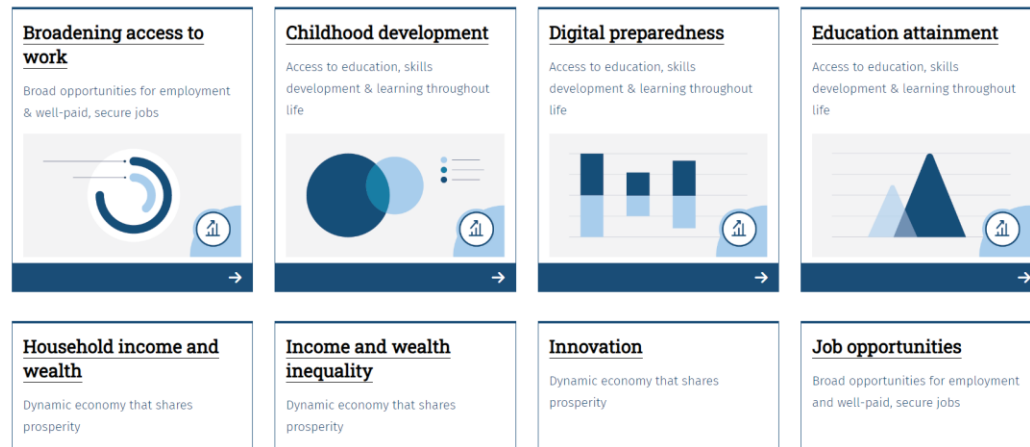
Sustainable

A society that sustainably uses natural and financial resources, protects and repairs the environment and builds resilience to combat challenges

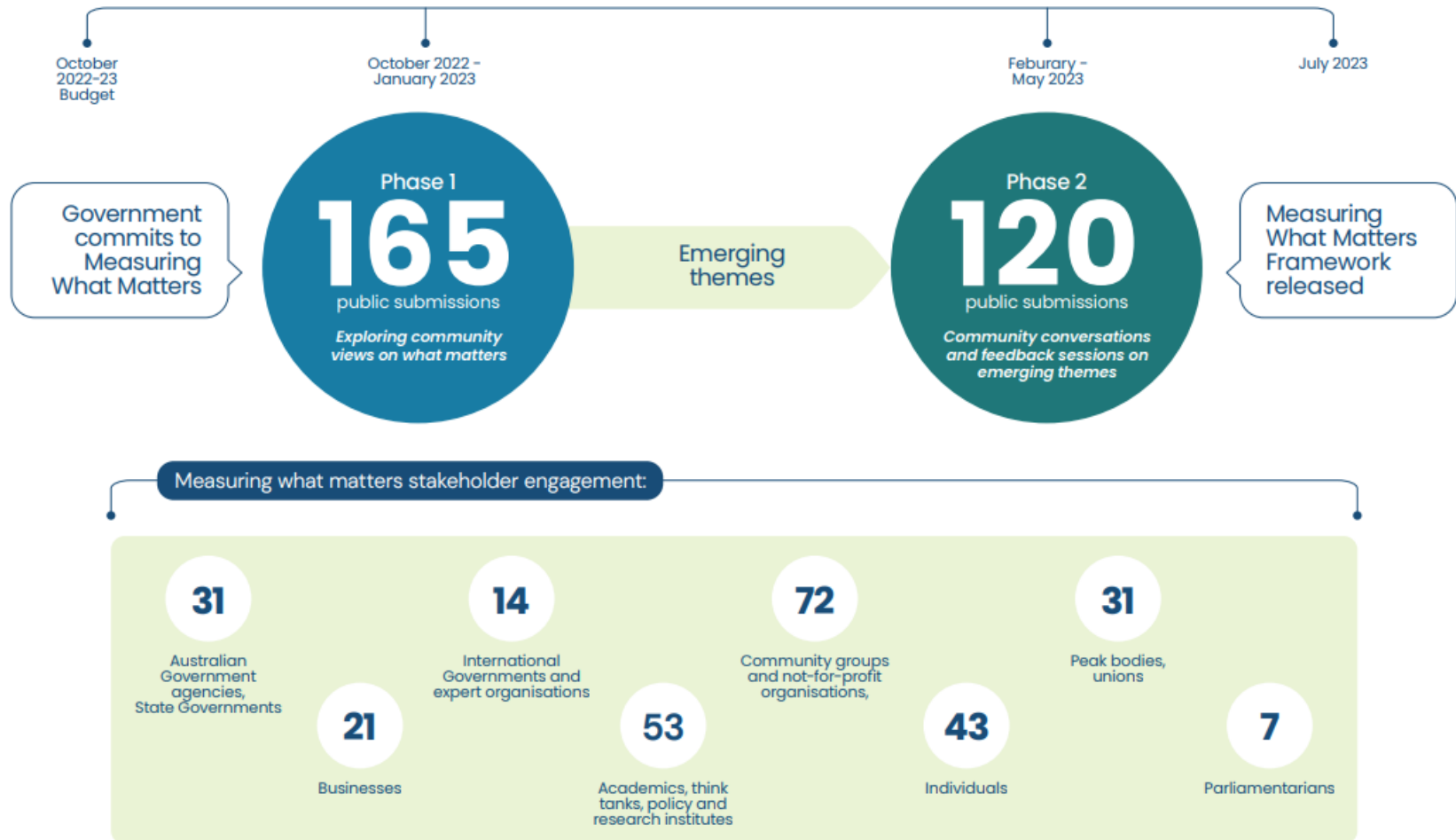


Prosperous

A society that has a dynamic, strong economy, invests in people's skills and education, and provides broad opportunities for employment and well-paid, secure jobs



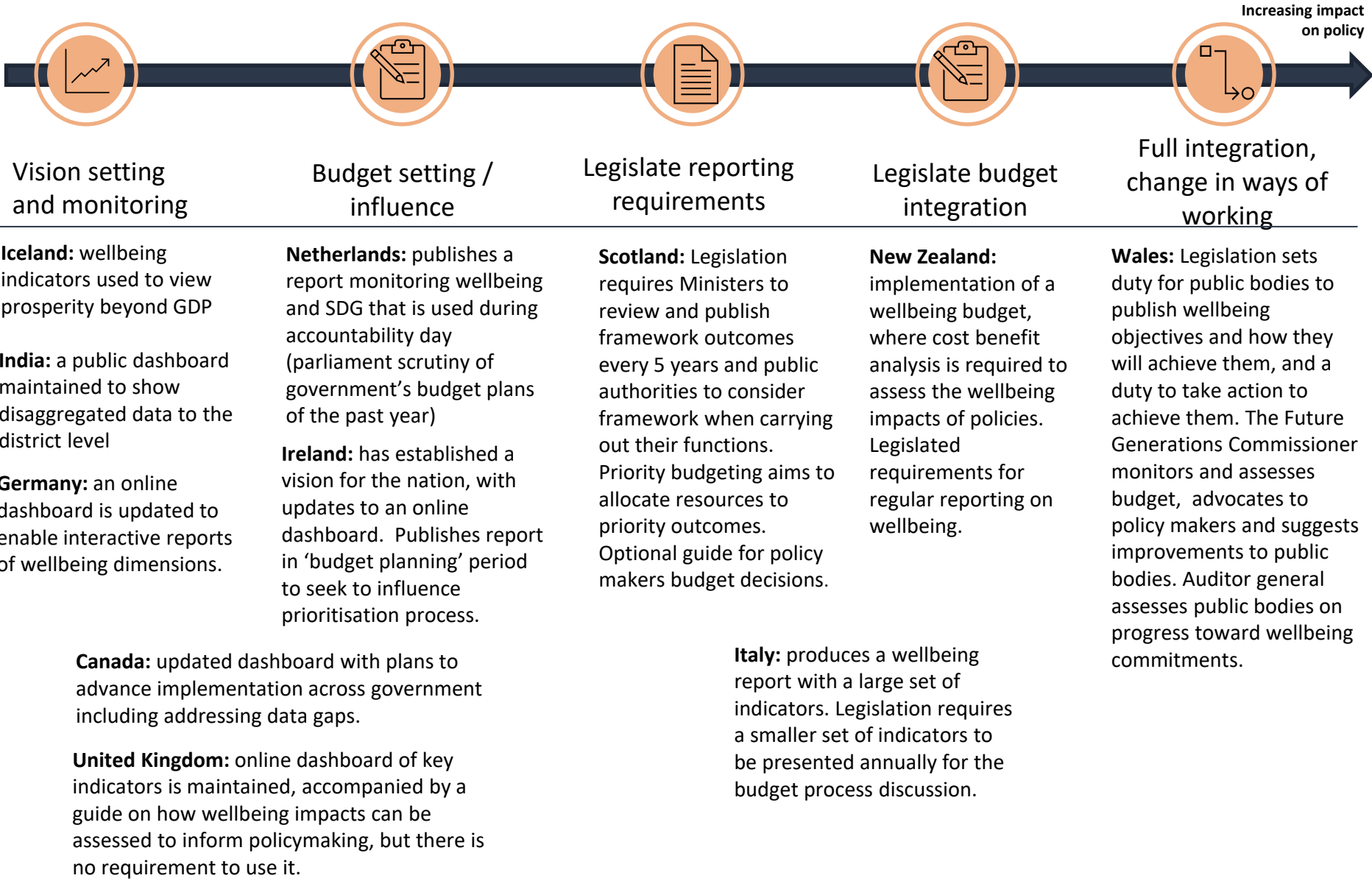
Extensive consultation informed the wellbeing framework



What's next?



Approaches to wellbeing frameworks overseas



Lessons learnt



Benefits of Measuring What Matters for gender budgeting and gender policy



“It’s all about tracking our progress so we can better align our economic and social goals in our communities and right across our country.”



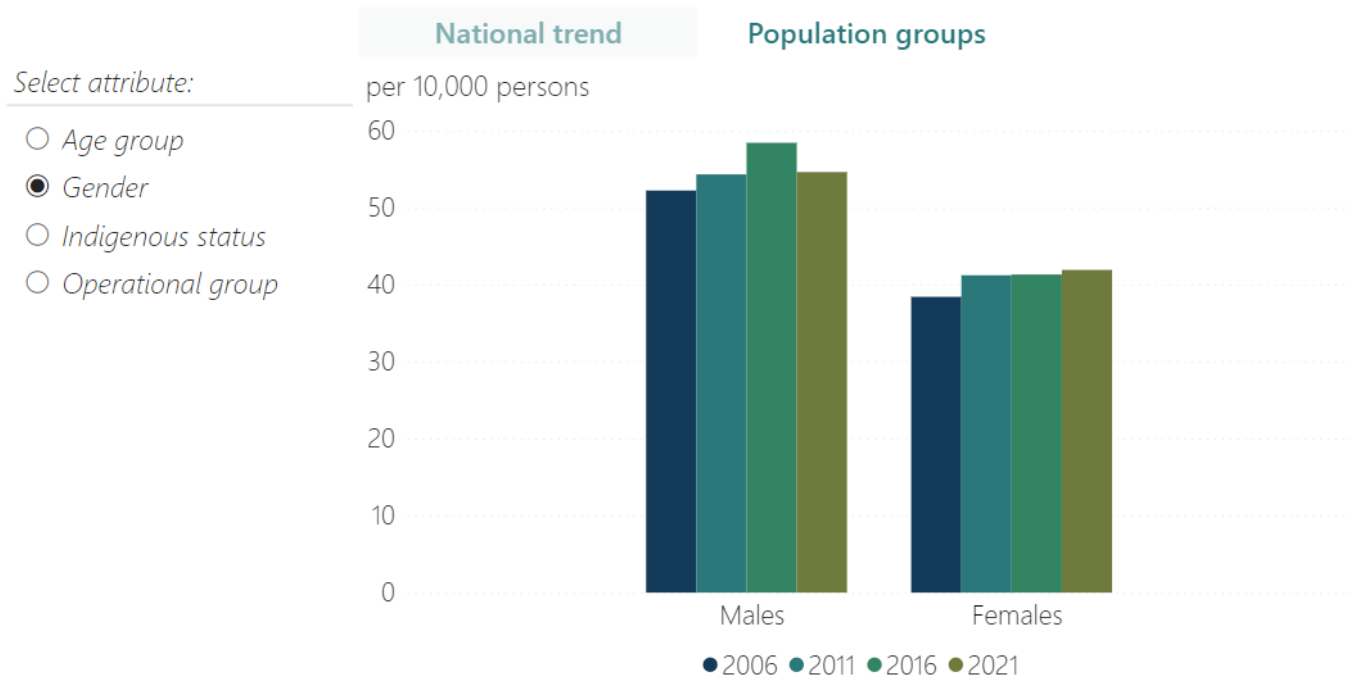
Treasurer Jim Chalmers

Questions?

Extra slides

Example: homelessness

Rate of people who are experiencing homelessness



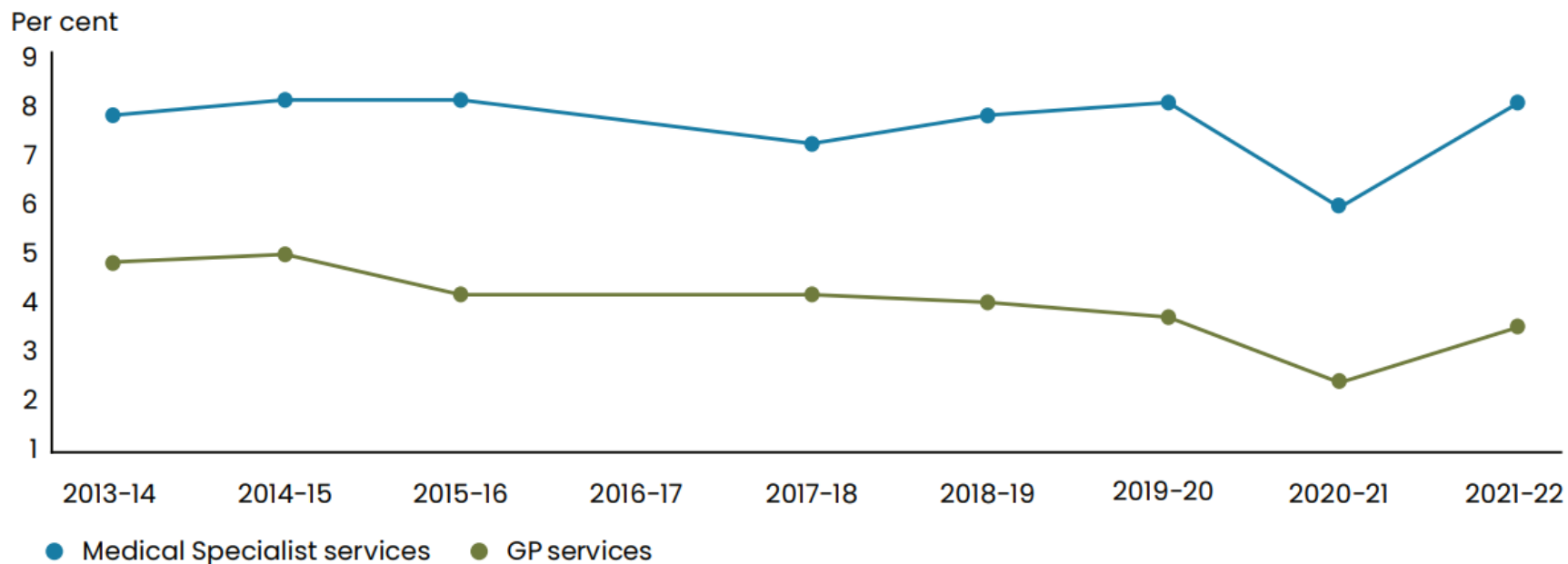
Source: ABS Census of Population and Housing

Footnote: (a) The ABS uses six operational groups for presenting estimates of people experiencing homelessness on Census night. Categories are mutually exclusive; therefore, people will only appear in one category.

(b) There may be issues associated with undercounting particular cohorts or types of

Example: measuring access to government services

Chart 3: Proportion of people who delayed seeing a GP or a medical specialist due to cost when needed



Source: ABS, Patient Experience Survey

Example: measuring environmental conditions

Air quality	Exposure to outdoor air pollution of PM2.5 ^(c)	Particulate matter is commonly used as a proxy indicator for exposure to air pollution	Stable 2017–18 to 2021–22	Varies by region
--------------------	---	--	---------------------------------	------------------

Example: measuring trust

Trust in institutions

Indicator	Metric	Why this metric	Progress	Latest Value ⁽ⁱ⁾
Trust in others	Proportion of people who report having general trust in others ^(a)	Generalised trust indicates whether people in the community are trusting of others	Improved 2006–2020	61.4% Others
Trust in key institutions	Proportion of people who report having trust in healthcare system ^(a)	Measures the belief that the healthcare system and the police will provide the intended services – which are key to wellbeing	Stable 2019–2020	76.4% Healthcare
	Proportion of people who have trust in police ^(a)		Stable 2019–2020	79.3% Police
Trust in Australian public services	Proportion of people who trust in Australian public services ^(b)	Whether people trust the public services to be reliable and conduct their service with integrity	Improved 2019–2022	61.0%
Trust in national government	Proportion of the population that express confidence in the national government ^(c)	Trust in government is linked to political participation, social cohesion and collaboration in tackling societal challenges	Deteriorated 2006–2022	49.9%
Representation in parliament	Proportion of Federal Australian Parliamentarians who are women ^(d)	Inclusivity of women in parliament relates to equality of representation political system	Improved 2002–2023	45.1% May 2023

Source: (a) ABS General Social Survey
 (b) Department of the Prime Minister and Cabinet, survey of Trust in Australian public services, 2019–2022
 (c) OECD How's Life? Well-being database
 (d) Australian Parliamentary Library and ABS Gender Indicators

Note: (i) Unless specified the latest value is the last data point in the series

Findings

Indicators:

- 20 improved
- 7 stable or little change
- 12 deteriorated
- 8 mixed trends
- 3 don't have data for comparison over time

Improved	Stable/mixed	Deteriorated
Life expectancy	Mental health	Prevalence of chronic condition
Emissions reduction	Access health services	Access to care and support services
Protected areas	Experience of violence	Online safety
Resource use and Waste Generation	Access to justice	National safety
Experience of discrimination	Air quality	Making ends meet
Acceptance of diversity	Social connections	Homelessness
First Nations languages spoken	Creative and cultural engagement	Biological diversity
Trust in others	Sense of belonging	Fiscal sustainability
Trust in Australian public services	Trust in key institutions	Economic resilience
Representation in parliament	Income and wealth inequality	Trust in national government
National income per capita	Wages	Productivity
Household income and wealth	Secure jobs	Skills development
Innovation	Overall life satisfaction	
Childhood development	Housing serviceability	
Literacy and numeracy skills at school	Feeling of safety	
Education attainment		
Digital Preparedness		
Job opportunities		
Broadening access to work		
Job satisfaction		

How were indicators and metrics selected?

Indicators should be:

- Relevant
 - Complete
 - Measurable
 - Comparable
 - Reliable
 - Understandable
- Indicators for the desired goal or outcome
 - Or use indicators that influence the outcome
 - Access to health services for life expectancy
 - Proxy indicators where necessary
 - Time spent on leisure activities for ‘time to build connections’

Consultation reactions: focus on action

Public sector

Something for the stewards: Measuring what matters could power-up public service culture reset



Australia's first national wellbeing model, and the broader project it's part of, have **profound implications for the public sector.**

Andrew Hudson, The Canberra Times, 21 July.

International

*Measures can be used to tell a story of why outcomes are inadequate and **work to take action at the core**, rather than spending money at downstream repair.*

[Katherine Trebeck \(co-founder of WEAll\)](#)

Today's Measuring What Matters statement is just a first step – now we have to turn goals into action

Warwick Smith, 21 July

Research sector

“Obviously there will always be considerable difficulty in measuring some dimensions of wellbeing, but that shouldn't be a deterrent, as many believe a **broken ruler is better than no ruler at all - that richness is added to policy discussions simply by attempting some form of measurement and assessment**”

The Saturday Paper
Saturday 29th July 2023

Community

Wellbeing requires collective effort



Inclusion, fairness and equity
Overall life satisfaction

Improving Australia's wellbeing depends on more than just government action. It requires a collective effort across all sectors.